

MONTHLY MEMBERSHIP PROGRESS REPORT

DISTRICT 318 D

Results as of: 5/31/2026

GMT:

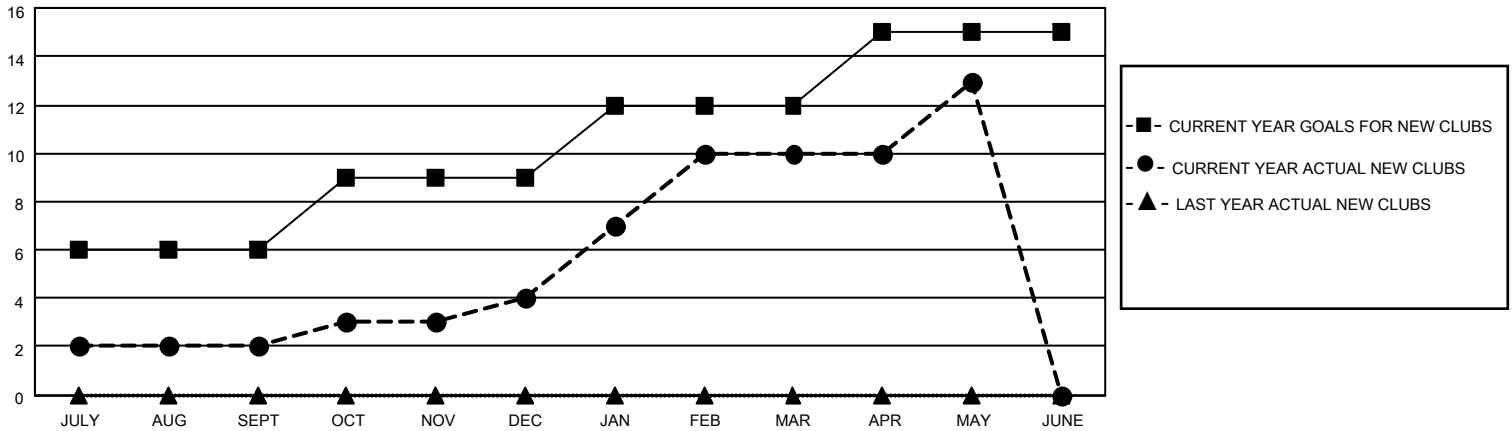
LOCATION INDIA

GMT CA

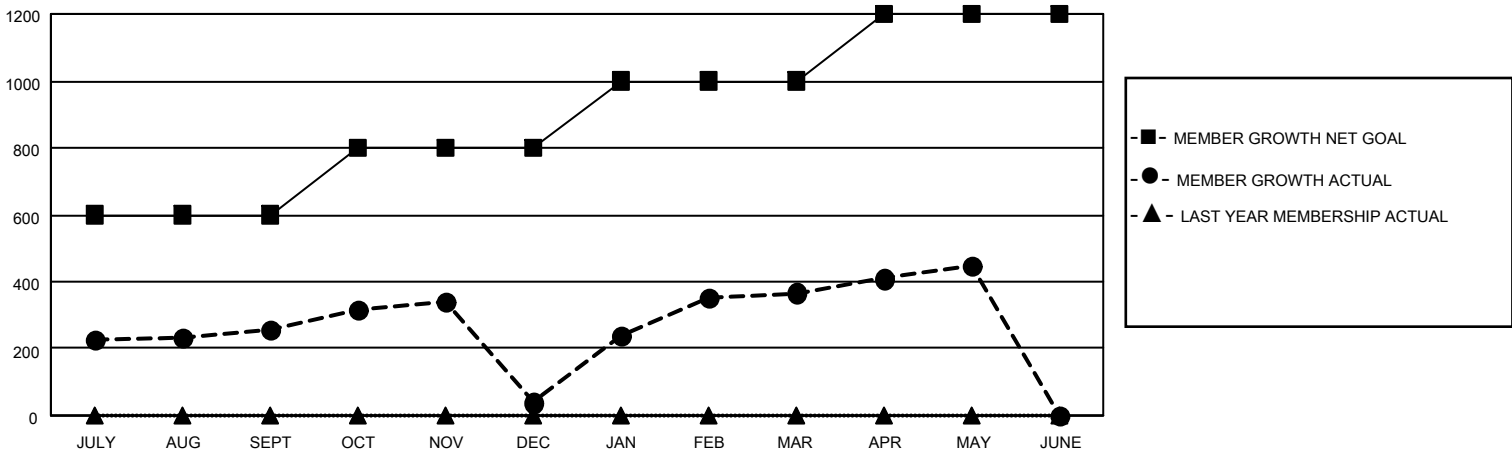
Clubs			
RESULTS FOR 2025-2026			
QUARTER	NEW CLUB GOAL	NEW CLUBS	DROPPED CLUBS
JULY/AUG/SEPT	6	2	0
OCT/NOV/DEC	3	2	6
JAN/FEB/MAR	3	6	1
APR/MAY/JUNE	3	3	0

Members			
RESULTS FOR 2025-2026			
QUARTER	MEMBER GROWTH NET GOAL	MEMBER GROWTH ACTUAL	DROPPED MEMBERS ACTUAL (including transfers)
JULY/AUG/SEPT	600	355	52
OCT/NOV/DEC	200	316	428
JAN/FEB/MAR	200	396	59
APR/MAY/JUNE	200	186	76

GOALS AND ACTUAL NEW CLUBS CUMULATIVE



GOALS AND ACTUAL MEMBERS CUMULATIVE



DROPPED CLUBS: 7

121 CLUBS OF 188 ADDED 1 OR MORE NEW MEMBERS

GENDER DISTRIBUTION

MALE 5,369 (78.32%)
FEMALE 1,486 (21.68%)

DROPPED MEMBERS

DECEASED	16
CLUB CANCELLED	256
OTHER	337
TOTAL	609

[CLICK HERE FOR CUMULATIVE MEMBERSHIP DATA](#)

TOTAL FAMILY UNIT MEMBERS	2,379
FAMILY MEMBERS PAYING HALF DUES	1,257